

**SCHIEDEL**

**RITE-VENT**



**NEW  
EDITION**

**AUGUST 2007**

## **WHAT FLUE?**

**How to match  
the appliance  
to the flue**



DOC/CP3/56 Issue 2 Aug 2007

A company of **LAFARGE**  
ROOFING



**Customer helpline: 0191 416 1150**

# What flue?

This guide shows how to match the correct flue with heating and hot water appliances. The flue type recommended against each product is based on a "standard flue installation", with a total flue length of approximately six metres. If the flue

system offered is of greater length than six metres, or requires an excessive amount of bends and/or long horizontal runs, please contact Schiedel Rite-Vent Commercial Department on **0191 416 1150**.

<b>Contents</b>	<b>Page</b>
Technical Support and Design Advice	4
CE Marking of Metal Chimneys and Flues	5
Flue Specifications	6-7
Typical Installation Drawings	8-9
Ideal Boilers	10
Potterton Boilers	12
Andrews Water Heaters	14
State Water Heaters	16
AO Smith Water Heaters	18
Powrmatic Heaters	20
Roberts Gordon	24
ACV Boilers	28
Hoval	30
Hamworthy Heating Ltd	38
Broag Remeha	42

*Although every care has been taken to ensure the accuracy of the information contained in this booklet we reserve the right to improve or change specifications.*

# Technical Support

Flue sizing and design consultation

Supply-and-fix service via accredited specialist installers

First class delivery and after sales service

Manufactured in accordance with appropriate European Standards under Quality Assurance BS EN ISO 9001:2000

**Customer helpline: 0191 416 1150**  
**[www.schiedelrite-vent.co.uk](http://www.schiedelrite-vent.co.uk)**

# Design Advice

Fan dilution systems

Generator/CHP exhaust systems

Smoke extraction ducts

Fire-rated ducts to BS 476 pt 20 (4 hrs)

Chimney relining systems

Freestanding chimney

Double-skin chimneys

Multi-flue chimneys

Guyed chimneys

Lattice masts (square, triangular etc.)

Structure-mounted chimneys

Building-supported chimneys

Offshore oil and gas applications

Industrial process fume extraction

Air movement/ventilation systems

Kitchen extract

# CE Marking of Metal Chimneys and Flues

A new European Harmonised Standard for the construction and installation of flues and chimneys was introduced on 1st April 2005. This is EN 1856 pt 1; Performance requirements for metal chimney systems (i.e. twin wall prefabricated chimney systems and liners fitting within an enclosed structure).

EN 1856 is different from the existing national standards it has replaced in three key ways:

- It introduces a user-readable classification system which designates the features of the product
- It introduces a requirement for certified product factory control, ensuring that the product you receive is in conformance with the performance designation. This is in addition to any existing ISO 9000 factory quality scheme.
- It introduces a requirement for manufacturers to make available performance and installation information. In particular the manufacturer will designate the intended use and installation of a product, relating this to the features classified. This will be of particular importance in the light of the intended EU Directive on product liability.

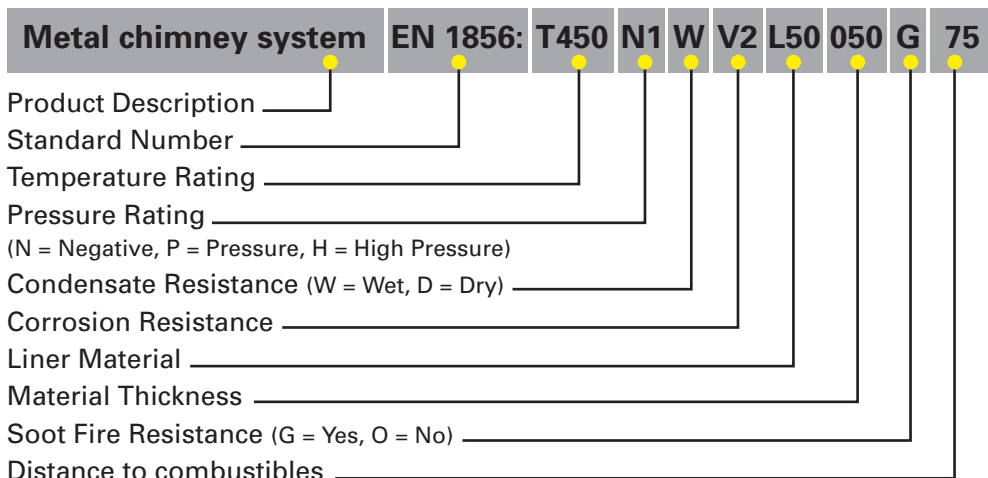
For the standards so far released, Schiedel Rite-Vent products have achieved designations suitable for all normal applications, both domestic and commercial. This means that Rite-Vent Schiedel chimney products can be specified and installed with confidence.

For further information and/or a copy of our Technical Guidance leaflet on the new European Harmonised Standard, contact Schiedel Rite-Vent on 0191 416 1150.

# CE Designations

... and how to make sense of them

The CE Designation Marking System is laid out as follows:



## Temperature Rating

Maximum temperature (°C) for continuous use of the flue. T450 is suitable for multifuel. T200 is suitable for gas and oil.

## Pressure Rating

Expressed as **N** for negative pressure applications, **P** for positive pressure and **H** for high positive pressure. Maximum allowed leakage rates are as defined below.

	Leakage rate (1/sec/m <sup>3</sup> )	Test pressure (Pa)
<b>N1</b>	2.0	40
<b>P1</b>	0.006	200
<b>P2</b>	0.12	200
<b>H1</b>	0.006	5000
<b>H2</b>	0.12	5000

For most applications, **N1** is suitable for conventional negative pressure boiler installations. **P1** is required for most positive pressure and fan flued boilers. **H** is for high pressure applications e.g. diesel generators, when the leakage rate is normally subject to specifier requirement.

## Condensate Resistance

Suitability for wet or dry operation. **W** designates ability to contain condensate within the flue, i.e. operating in the wet and dry conditions created by condensing appliances. **D** designates ability to operate under dry conditions only, usually meaning a flue gas temperature high enough to avoid condensate formation.

## Corrosion Resistance This is fuel dependent as follows:

- V1** Tested and approved as resistant to attack from products of combustion from gas.
- V2** Tested and approved as resistant to attack from products of combustion from light oil (sulphur content up to 0.2%) and natural wood.
- V3** Tested and approved as resistant to attack from products of combustion from heavy oil (sulphur content >0.2%) solid fuels and peat.
- Vm** Not tested and approved but rating declared by the manufacturer.

## Liner Material Specification

Two features are specified, firstly a code for the minimum material grade and secondly material thickness:

<b>L11</b>	<b>Aluminium 99% pure</b>
<b>L20</b>	<b>304</b>
<b>L30</b>	<b>304L</b>
<b>L40</b>	<b>316</b>
<b>L50</b>	<b>316L</b>
Thickness e.g. 060 means 0.6mm	

Normally liners expected to withstand the corrosion effect of multifuel, wood or heavy oil are made with 316L. Light oil is less corrosive and normally 304 has proved adequate in dry conditions, but in the increasingly common wet conditions created by high efficiency boilers, a higher grade is required (316L).

## Soot Fire Resistance

Expressed as either G, with soot fire resistance or O, without, followed by the declared minimum distance to combustibles expressed in mm. To obtain the G classification, means that the product has been tested at 1000°C for 30 minutes and remains intact and the temperature of combustible material at the designated distance does not exceed 100°C at T. amb. 20°C. Products with O classification mean the product is not rated as soot fire resistant. Normally this will occur with low temperature applications such as condensing gas boilers, where lip seals are used, which would not withstand a soot fire.

## Distance to Combustibles

Defined in soot fire resistance above. This definition is easily misunderstood. It has to be read in conjunction with the soot fire resistance classification and is NOT a stand alone classification.

# Flue specifications

## Triplelock

Flexible flue liner for re-lining existing masonry chimneys, for use with Gas and Oil (28 second) appliances with a maximum flue gas temperature of 260°C. Available in diameters from 100mm to 400mm.

---

## Tecnoflex (Turboflex)

Multi fuel flexible flue liner for re-lining existing masonry chimney, for use with solid fuel. Available in diameters from 100mm to 400mm.

---

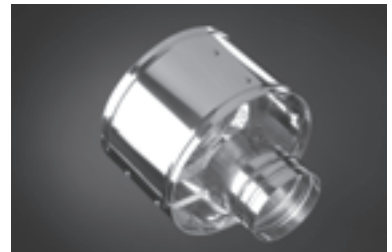
## Commercial B Vent

Twin wall gas vent for gas atmospheric boilers and water heaters with a maximum flue gas temperature of 260°C. Available in diameters from 180mm to 300mm.

---

## ICS

Twin wall insulated chimney system for gas,oil, wood and multifuel appliances. For use on large residential and commercial applications. Available in diameters from 80mm to 755mm.





## ICS Plus

Twin wall insulated chimney system for gas and oil condensing appliances, in large residential and commercial applications. Available in diameters from 80mm to 755mm.

---

## ICS 5000

Twin wall insulated exhaust system for gas and diesel generators and CHP units, suitable for positive pressures upto 7500 Pa. Available in diameters from 150mm to 75mm.

---

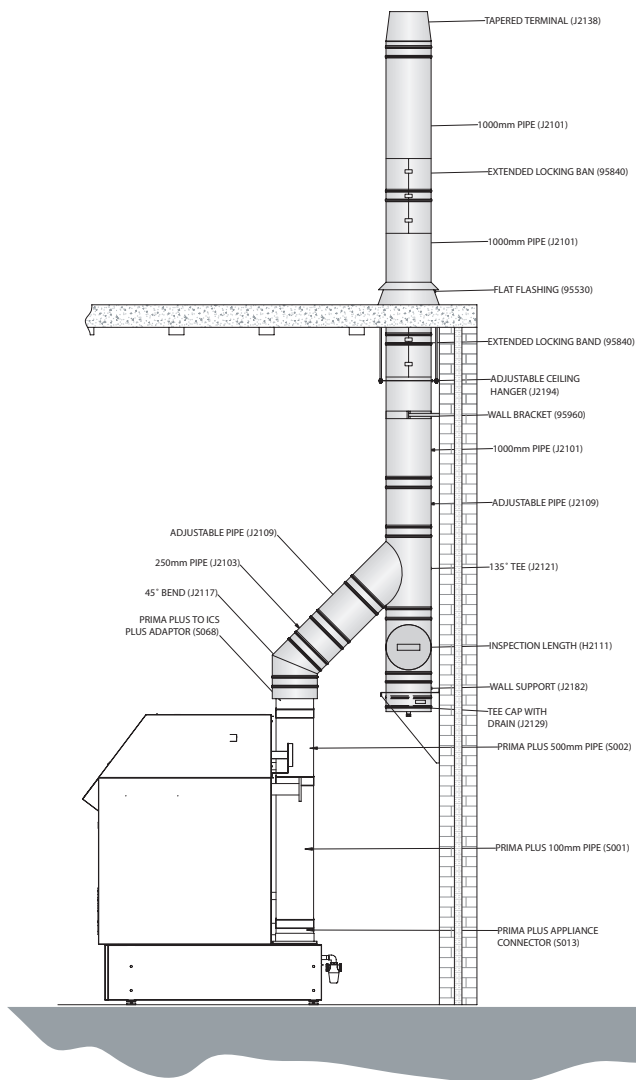
## Prima Plus

Single wall flue system for gas, oil, wood and multifuel appliances, in large residential and commercial applications. Suitable for condensing appliances (with the addition of gasket) and re-lining chimneys. Available in diameters from 80mm to 755mm.

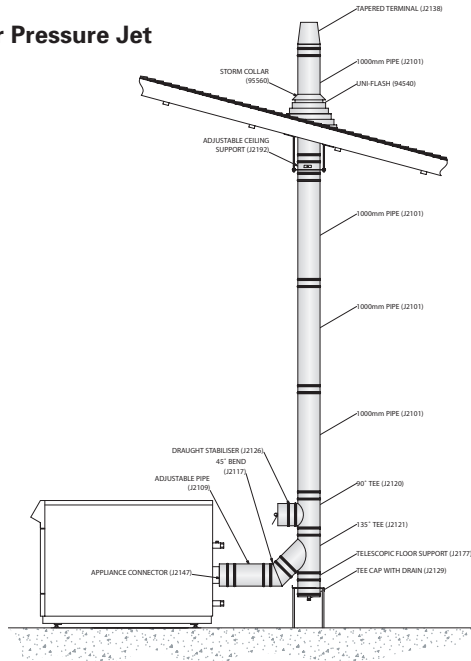


# Typical Commercial Installations

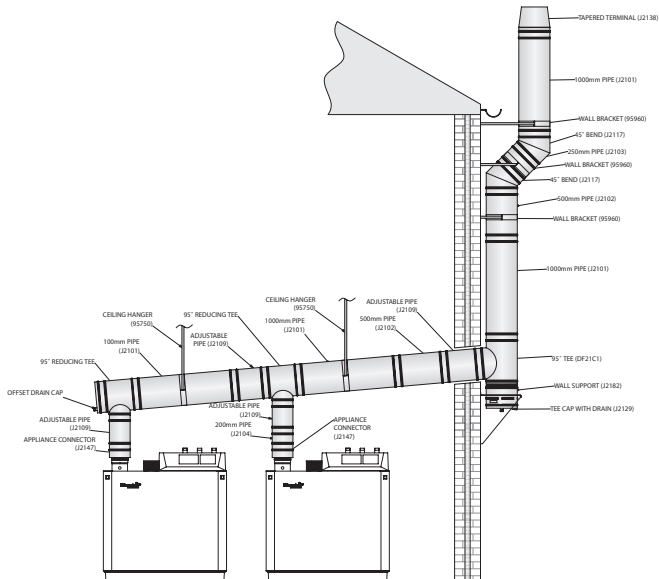
## ICS Plus & Prima Plus Single Condensing Boiler



## ICS-25 Single Boiler Pressure Jet



## ICS Plus



## IDEAL BOILERS

Appliance		Appliance Operation	
<i>Model</i>	<i>Size</i>	<i>Fuel</i>	<i>Burner Type</i>
Concord	40/50	Gas	Atmospheric
CXA/CXS/CXSD	60/70	Gas	Atmospheric
	80/90/100	Gas	Atmospheric
	110/120	Gas	Atmospheric
Concord CXC	48/70/94/116	Gas	Condensing
Concord CXSI/CXDI	110/120/140/160	Gas	Atmospheric
	180	Gas	Atmospheric
Concord ES	480/540	Gas	Atmospheric
	610/680/750	Gas	Atmospheric
	890/1020/1160	Gas	Atmospheric
Imax W	W45/W60	Gas	Condensing
	W80	Gas	Condensing
Imas Plus	F80/F120/F160	Gas	Condensing
	F200/F240/F280	Gas	Condensing
Super Series 4	50	Gas	Pre-mix
	100	Gas	Pre-mix
	150	Gas	Pre-mix
	200/250	Gas	Pre-mix
	300	Gas	Pre-mix
	350/400	Gas	Pre-mix
	450/500	Gas	Pre-mix
	550/600	Gas	Pre-mix
Super Plus	200/2	Gas	Pre-mix
	300/3	Gas	Pre-mix
	400/4	Gas	Pre-mix
	300/3 A	Gas	Pre-mix
	400/4 A	Gas	Pre-mix
	500/5 A	Gas	Pre-mix
	600/6 A	Gas	Pre-mix
Vanguard S	190	Gas/Oil	Pressure Jet
	250/300/360/420	Gas/Oil	Pressure Jet
	500/600	Gas/Oil	Pressure Jet
	730/820/1040/1200	Gas/Oil	Pressure Jet
	1400	Gas/Oil	Pressure Jet
	1850	Gas/Oil	Pressure Jet
	2350	Gas/Oil	Pressure Jet
	3000	Gas/Oil	Pressure Jet

<b>Flue Size</b>		
<b>Internal Dia mm</b>	<b>Internal use</b>	<b>External use</b>
150mm	B Vent	K Vent/ICS
180mm	Commercial B Vent	ICS
200mm	Commercial B Vent	ICS
250mm	Commercial B Vent	ICS
150mm	Prima Plus	ICS Plus
250mm	Commercial B Vent	ICS
300mm	Commercial B Vent	ICS
250mm	Commercial B Vent	ICS
300mm	Commercial B Vent	ICS
355mm	ICS	ICS
80mm	Prima Plus/ICS Plus	ICS Plus
100mm	Prima Plus/ICS Plus	ICS Plus
150mm	Prima Plus/ICS Plus	ICS Plus
200mm	Prima Plus/ICS Plus	ICS Plus
130mm	ICS	ICS
180mm	ICS	ICS
200mm	ICS	ICS
250mm	ICS	ICS
300mm	ICS	ICS
355mm	ICS	ICS
405mm	ICS	ICS
455mm	ICS	ICS
355mm	ICS	ICS
355mm	ICS	ICS
355mm	ICS	ICS
455mm	ICS	ICS
455mm	ICS	ICS
455mm	ICS	ICS
455mm	ICS	ICS
200mm	ICS	ICS
250mm	ICS	ICS
300mm	ICS	ICS
355mm	ICS	ICS
405mm	ICS	ICS
455mm	ICS	ICS
555mm	ICS	ICS
605mm	ICS	ICS

**IDEAL BOILERS (continued)**

<b>Appliance</b>		<b>Appliance Operation</b>	
<b>Model</b>	<b>Size</b>	<b>Fuel</b>	<b>Burner Type</b>
	3500	Gas/Oil	Pressure Jet
Buccanneer GT	3/4/5	Gas/Oil	Pressure Jet
Falcon GTE	4/5	Gas/Oil	Pressure Jet
	6/7/8	Gas/Oil	Pressure Jet
Harrier GT	5/6	Gas/Oil or Dual	Pressure Jet
	7/8/9	Gas/Oil or Dual	Pressure Jet
Viceroy GT	8/9/10	Gas/Oil or Dual	Pressure Jet
	11/12/13/14	Gas or Dual	Pressure Jet
Viscount GT	14/15/16	Gas or Dual	Pressure Jet
	17/18/19/20	Gas or Dual	Pressure Jet
	21/22/23/24/258	Gas or Dual	Pressure Jet

**POTTERTON BOILERS**

<b>Appliance</b>		<b>Appliance Operation</b>	
<b>Model</b>	<b>Size</b>	<b>Fuel</b>	<b>Burner Type</b>
Derwent Compact A/Compact Plus	4/5	Gas	Atmospheric
Derwent Compact A/Compact Plus	6/7	Gas	Atmospheric
Derwent Compact A/Compact Plus	8	Gas	Atmospheric
Derwent Prestige Plus	8/9/10/11	Gas	Atmospheric
Derwent Prestige Plus	12/13/14/15/16	Gas	Atmospheric
Derwent Prestige Plus	17/18	Gas	Atmospheric
Derwent Prestige Plus	20/22	Gas	Atmospheric
Derwent Compact Condensing	4	Gas	Condensing
Derwent Compact Condensing	6	Gas	Condensing
Derwent Compact Condensing	8	Gas	Condensing
Eurocondense <i>two</i>	90/120	Gas	Condensing
Eurocondense <i>two</i>	160/200/250	Gas	Condensing
Eurocondense <i>two</i>	320/400/500	Gas	Condensing
Rapido F110	3/4	Gas/Oil	Pressure Jet
Rapido F110	5/6	Gas/Oil	Pressure Jet
Rapido F210	5/6/7/8	Gas/Oil	Pressure Jet
Rapido F210	9/10/11/12	Gas/Oil	Pressure Jet
NXR3	4/5/6/7	Gas/Oil	Pressure Jet
NXR3	8/9	Gas/Oil	Pressure Jet
NXR4	9/10/11	Gas/Oil	Pressure Jet
NXR4	12/13/14/15/16/17	Gas/Oil	Pressure Jet
Arizona Evolution	93/116/140/186/233/291	Gas/Oil	Pressure Jet

<b>Flue Size</b>		
<b>Internal Dia mm</b>	<b>Internal use</b>	<b>External use</b>
655mm	ICS	ICS
130mm	ICS	ICS
150mm	ICS	ICS
180mm	ICS	ICS
180mm	ICS	ICS
200mm	ICS	ICS
250mm	ICS	ICS
300mm	ICS	ICS
455mm	ICS	ICS
505mm	ICS	ICS
*		

<b>Flue Size</b>		
<b>Internal Dia mm</b>	<b>Internal use</b>	<b>External use</b>
180mm	Commercial B Vent	ICS
200mm	Commercial B Vent	ICS
250mm	Commercial B Vent	ICS
250mm	Commercial B Vent	ICS
300mm	Commercial B Vent	ICS
350mm	ICS	ICS
400mm	ICS	ICS
180mm	Prima Plus/ICS Plus	ICS Plus
200mm	Prima Plus/ICS Plus	ICS Plus
250mm	Prima Plus/ICS Plus	ICS Plus
150mm	Prima Plus/ICS Plus	ICS Plus
180mm	Prima Plus/ICS Plus	ICS Plus
250mm	Prima Plus/ICS Plus	ICS Plus
130mm	ICS	ICS
150mm	ICS	ICS
180mm	ICS	ICS
230mm	ICS	ICS
180mm	ICS	ICS
200mm	ICS	ICS
300mm	ICS	ICS
355mm	ICS	ICS
200mm	ICS	ICS

**POTTERTON BOILERS (continued)**

<b>Appliance</b>		<b>Appliance Operation</b>	
<i>Model</i>	<i>Size</i>	<i>Fuel</i>	<i>Burner Type</i>
Arizona Evolution	360/420	Gas/Oil	Pressure Jet
Arizona Evolution	500/600	Gas/Oil	Pressure Jet
Arizona Evolution	730/820/1040	Gas/Oil	Pressure Jet
Arizona Evolution	1320	Gas/Oil	Pressure Jet
Arizona Evolution	1570/1850	Gas/Oil	Pressure Jet
Arizona Evolution	2200/2650	Gas/Oil	Pressure Jet
Arizona Evolution	3000/3500	Gas/Oil	Pressure Jet
Sirius FS	90/105/130/160	Gas	Condensing

**ANDREWS WATER HEATERS**

<b>Appliance</b>		<b>Appliance Operation</b>	
<i>Model</i>	<i>Size</i>	<i>Fuel</i>	<i>Burner Type</i>
Standard Range	24/39	Gas	Atmospheric
Standard Range	32/40	Gas	Atmospheric
Standard Range	40/61	Gas	Atmospheric
Standard Range	63/62	Gas	Atmospheric
Standard Range	84/87	Gas	Atmospheric
Hi Flo Range	32/143	Gas	Atmospheric
Hi Flo Range	65/173	Gas	Atmospheric
Hi Flo Range	81/264	Gas	Atmospheric
Hi Flo Range	62/341	Gas	Atmospheric
Hi Flo Range	54/418	Gas	Atmospheric
Hi Flo Range	54/440	Gas	Atmospheric
Oil-Fired	OF40/100	Oil	Pressure Jet
Oil-Fired	OF59/135	Oil	Pressure Jet
Oil-Fired	OF58/204	Oil	Pressure Jet
Oil-Fired	OF86/287	Oil	Pressure Jet
Oil-Fired	OF77/436	Oil	Pressure Jet
Oil-Fired	OF73/654	Oil	Pressure Jet
Supa Flo R300	301	Gas	Condensing
Supa Flo R300	302	Gas	Condensing
Supa Flo R300	303	Gas	Condensing
Supa Flo R300	304	Gas	Condensing
Supa Flo R300	305	Gas	Condensing
Supa Flo R300	306	Gas	Condensing
Supa Flo R300	307	Gas	Condensing
Supa Flo R2000	2017	Gas	Pre-mix



<b>Flue Size</b>		
<b>Internal Dia mm</b>	<b>Internal use</b>	<b>External use</b>
250mm	ICS	ICS
300mm	ICS	ICS
350mm	ICS	ICS
400mm	ICS	ICS
450mm	ICS	ICS
520mm	ICS	ICS
570mm	ICS	ICS
100mm	Prima Plus/ICS Plus	ICS Plus

<b>Flue Size</b>		
<b>Internal Dia mm</b>	<b>Internal use</b>	<b>External use</b>
100mm	B Vent	K Vent/ICS
100mm	B Vent	K Vent/ICS
100mm	B Vent	K Vent/ICS
130mm	B Vent	K Vent/ICS
130mm	B Vent	K Vent/ICS
150mm	B Vent	K Vent/ICS
150mm	B Vent	K Vent/ICS
200mm	Commercial B Vent	ICS
200mm	Commercial B Vent	ICS
250mm	Commercial B Vent	ICS
250mm	Commercial B Vent	ICS
150mm	ICS	ICS
150mm	ICS	ICS
200mm	ICS	ICS
200mm	ICS	ICS
250mm	ICS	ICS
250mm	ICS	ICS
100mm	Prima Plus/ICS Plus	ICS Plus
100mm	Prima Plus/ICS Plus	ICS Plus
130mm	Prima Plus/ICS Plus	ICS Plus
150mm	Prima Plus/ICS Plus	ICS Plus
180mm	Prima Plus/ICS Plus	ICS Plus
200mm	Prima Plus/ICS Plus	ICS Plus
200mm	Prima Plus/ICS Plus	ICS Plus
200mm	ICS	ICS

**ANDREWS WATER HEATERS (continued)**

<b>Appliance</b>		<b>Appliance Operation</b>	
<i>Model</i>	<i>Size</i>	<i>Fuel</i>	<i>Burner Type</i>
Supa Flo R2000	2022	Gas	Pre-mix
Supa Flo R2000	2028	Gas	Pre-mix
Supa Flo R2000	2034	Gas	Pre-mix
Supa Flo R2000	2041	Gas	Pre-mix
Supa Flo R2000	2048	Gas	Pre-mix
Supa Flo R2000	2056	Gas	Pre-mix
Supa Flo R2000	2066	Gas	Pre-mix
Supa Flo R2000	2077	Gas	Pre-mix
Supa Flo R2000	2090	Gas	Pre-mix
Supa Flo R2000	2105	Gas	Pre-mix
Supa Flo R2000	2122	Gas	Pre-mix
Supa Flo R2200	2207	Gas	Pre-mix
Supa Flo R2200	2210	Gas	Pre-mix
Supa Flo R2200	2213	Gas	Pre-mix
Supa Flo R2200	2216	Gas	Pre-mix
Supa Flo R2200	2220	Gas	Pre-mix
Supa Flo R2200	2224	Gas	Pre-mix
Supa Flo R2200	2228	Gas	Pre-mix
Supa Flo R18	132	Gas	Pre-mix
Supa Flo R18	154	Gas	Pre-mix
Supa Flo R18	180	Gas	Pre-mix
Supa Flo R18	210	Gas	Pre-mix
Supa Flo R18	244	Gas	Pre-mix
Supa Flo R18	280	Gas	Pre-mix

**STATE WATER HEATERS**

<b>Appliance</b>		<b>Appliance Operation</b>	
<i>Model</i>	<i>Size</i>	<i>Fuel</i>	<i>Burner Type</i>
PRV	30 NORS	Gas	Atmospheric
PRV	40 NORS	Gas	Atmospheric
PRV	50 NRRT	Gas	Atmospheric
SCE/SCT	75-75	Gas	Atmospheric
SCE/SCT	100-95	Gas	Atmospheric
Sandblaster	10-115	Gas	Atmospheric
Sandblaster	80-140	Gas	Atmospheric
Sandblaster	80-180	Gas	Atmospheric
Sandblaster	95-199	Gas	Atmospheric

<b>Flue Size</b>		
<b>Internal Dia mm</b>	<b>Internal use</b>	<b>External use</b>
230mm	ICS	ICS
250mm	ICS	ICS
250mm	ICS	ICS
300mm	ICS	ICS
300mm	ICS	ICS
355mm	ICS	ICS
355mm	ICS	ICS
405mm	ICS	ICS
405mm	ICS	ICS
455mm	ICS	ICS
455mm	ICS	ICS
150mm	ICS	ICS
180mm	ICS	ICS
200mm	ICS	ICS
200mm	ICS	ICS
250mm	ICS	ICS
250mm	ICS	ICS
300mm	ICS	ICS
455mm	ICS	ICS
505mm	ICS	ICS
555mm	ICS	ICS
605mm	ICS	ICS
655mm	ICS	ICS
705mm	ICS	ICS

<b>Flue Size</b>		
<b>Internal Dia mm</b>	<b>Internal use</b>	<b>External use</b>
80mm	B Vent	K Vent/ICS
80mm	B Vent	K Vent/ICS
100mm	B Vent	K Vent/ICS
130mm	B Vent	K Vent/ICS
130mm	B Vent	K Vent/ICS
130mm	B Vent	K Vent/ICS
130mm	B Vent	K Vent/ICS
150mm	B Vent	K Vent/ICS
180mm	Commercial B Vent	ICS

**STATE WATER HEATERS (continued)**

<b>Appliance</b>		<b>Appliance Operation</b>	
<i>Model</i>	<i>Size</i>	<i>Fuel</i>	<i>Burner Type</i>
Sandblaster	95-260	Gas	Atmospheric
Sandblaster	70-360	Gas	Atmospheric
Sandblaster	65/400	Gas	Atmospheric
Sandblaster	65-500	Gas	Atmospheric
SOF	85-220	Oil	Pressue Jet
SOF	85-260	Oil	Pressue Jet
SOF	85-300	Oil	Pressue Jet
SOF	75-390	Oil	Pressue Jet
SOF	75-470	Oil	Pressue Jet
SOF	70-700	Oil	Pressue Jet

**AO SMITH WATER HEATERS**

<b>Appliance</b>		<b>Appliance Operation</b>	
<i>Model</i>	<i>Size</i>	<i>Fuel</i>	<i>Burner Type</i>
EQ	115	Gas	Atmospheric
EQ	155	Gas	Atmospheric
EQ	200	Gas	Atmospheric
EQ	280	Gas	Atmospheric
EQ	380	Gas	Atmospheric
BTI	65	Gas	Atmospheric
BTI	85	Gas	Atmospheric
BTI	100	Gas	Atmospheric
ADM/R	40	Gas	Atmospheric
ADM/R	50	Gas	Atmospheric
ADM/R	60	Gas	Atmospheric
ADM/R	80	Gas	Atmospheric
ADM/R	90	Gas	Atmospheric
ADM/R	115	Gas	Atmospheric
ADM/R	135	Gas	Atmospheric
COF	199	Gas/Oil	Pressure Jet
COF	245	Gas/Oil	Pressure Jet
COF	315	Gas/Oil	Pressure Jet
COF	385	Gas/Oil	Pressure Jet
COF	455	Gas/Oil	Pressure Jet
COF	700	Gas/Oil	Pressure Jet

<b>Flue Size</b>		
<b>Internal Dia mm</b>	<b>Internal use</b>	<b>External use</b>
180mm	Commercial B Vent	ICS
200mm	Commercial B Vent	ICS
250mm	Commercial B Vent	ICS
250mm	Commercial B Vent	ICS
150mm	ICS	ICS
200mm	ICS	ICS
200mm	ICS	ICS
200mm	ICS	ICS
200mm	ICS	ICS
250mm	ICS	ICS

<b>Flue Size</b>		
<b>Internal Dia mm</b>	<b>Internal use</b>	<b>External use</b>
80mm	B Vent	ICS
80mm	B Vent	ICS
100mm	B Vent	K Vent/ICS
130mm	B Vent	K Vent/ICS
130mm	B Vent	K Vent/ICS
100mm	B Vent	K Vent/ICS
130mm	B Vent	K Vent/ICS
130mm	B Vent	K Vent/ICS
150mm	B Vent	K Vent/ICS
150mm	B Vent	K Vent/ICS
180mm	Commercial B Vent	ICS
180mm	Commercial B Vent	ICS
230mm	Commercial B Vent	ICS
230mm	Commercial B Vent	ICS
230mm	Commercial B Vent	ICS
150mm	ICS	ICS
200mm	ICS	ICS
200mm	ICS	ICS
200mm	ICS	ICS
200mm	ICS	ICS
250mm	ICS	ICS

## POWRMATIC HEATERS

Appliance		Appliance Operation	
<i>Model</i>	<i>Size</i>	<i>Fuel</i>	<i>Burner Type</i>
CPE-AG	100	Gas	Atmospheric
CPE-AG	200	Gas	Atmospheric
CPE-AG	300	Gas	Atmospheric
NCE-AG	100	Gas	Atmospheric
NCE-AG	200	Gas	Atmospheric
CP	100	Gas	Pressure Jet
CP	150	Gas	Pressure Jet
CP	200	Gas	Pressure Jet
CP	300	Gas	Pressure Jet
CP	400	Gas	Pressure Jet
CP	500	Gas	Pressure Jet
CP	600	Gas	Pressure Jet
CP	700	Gas	Pressure Jet
CP	800	Gas	Pressure Jet
CP	1000	Gas	Pressure Jet
CP	1250	Gas	Pressure Jet
CP	100	Oil	Pressure Jet
CP	150	Oil	Pressure Jet
CP	200	Oil	Pressure Jet
CP	300	Oil	Pressure Jet
CP	400	Oil	Pressure Jet
CP	500	Oil	Pressure Jet
CP	600	Oil	Pressure Jet
CP	700	Oil	Pressure Jet
CP	800	Oil	Pressure Jet
CP	1000	Oil	Pressure Jet
CP	1250	Oil	Pressure Jet
NCA	100	Gas	Pressure Jet
NCA	150	Gas	Pressure Jet
NCA	200	Gas	Pressure Jet
NCA	300	Gas	Pressure Jet
NCA	100	Oil	Pressure Jet
NCA	150	Oil	Pressure Jet
NCA	200	Oil	Pressure Jet
NCA	300	Oil	Pressure Jet
CA	100	Gas	Pressure Jet
CA	150	Gas	Pressure Jet

Flue Size		
<i>Internal Dia mm</i>	<i>Internal use</i>	<i>External use</i>
200mm	Prima Plus	Prima Plus/ICS
200mm	Prima Plus	Prima Plus/ICS
250mm	Prima Plus	Prima Plus/ICS
200mm	Prima Plus	Prima Plus/ICS
200mm	Prima Plus	Prima Plus/ICS
125mm	Prima Plus	Prima Plus/ICS
125mm	Prima Plus	Prima Plus/ICS
125mm	Prima Plus	Prima Plus/ICS
150mm	Prima Plus	Prima Plus/ICS
150mm	Prima Plus	Prima Plus/ICS
180mm	Prima Plus	Prima Plus/ICS
180mm	Prima Plus	Prima Plus/ICS
180mm	Prima Plus	Prima Plus/ICS
200mm	Prima Plus	Prima Plus/ICS
200mm	Prima Plus	Prima Plus/ICS
200mm	Prima Plus	Prima Plus/ICS
125mm	Prima Plus	Prima Plus/ICS
125mm	Prima Plus	Prima Plus/ICS
125mm	Prima Plus	Prima Plus/ICS
150mm	Prima Plus	Prima Plus/ICS
150mm	Prima Plus	Prima Plus/ICS
180mm	Prima Plus	Prima Plus/ICS
180mm	Prima Plus	Prima Plus/ICS
180mm	Prima Plus	Prima Plus/ICS
200mm	Prima Plus	Prima Plus/ICS
200mm	Prima Plus	Prima Plus/ICS
200mm	Prima Plus	Prima Plus/ICS
125mm	Prima Plus	Prima Plus/ICS
125mm	Prima Plus	Prima Plus/ICS
125mm	Prima Plus	Prima Plus/ICS
150mm	Prima Plus	Prima Plus/ICS
125mm	Prima Plus	Prima Plus/ICS
125mm	Prima Plus	Prima Plus/ICS
125mm	Prima Plus	Prima Plus/ICS
150mm	Prima Plus	Prima Plus/ICS
125mm	Prima Plus	Prima Plus/ICS
125mm	Prima Plus	Prima Plus/ICS

**POWRMATIC HEATERS (continued)**

<b>Appliance</b>		<b>Appliance Operation</b>	
<i>Model</i>	<i>Size</i>	<i>Fuel</i>	<i>Burner Type</i>
CA	200	Gas	Pressure Jet
CA	300	Gas	Pressure Jet
CA	400	Gas	Pressure Jet
CA	500	Gas	Pressure Jet
CA	600	Gas	Pressure Jet
CA	700	Gas	Pressure Jet
CA	800	Gas	Pressure Jet
CA	1000	Gas	Pressure Jet
CA	1500	Gas	Pressure Jet
CA	2000	Gas	Pressure Jet
CA	100	Oil	Pressure Jet
CA	150	Oil	Pressure Jet
CA	200	Oil	Pressure Jet
CA	300	Oil	Pressure Jet
CA	400	Oil	Pressure Jet
CA	500	Oil	Pressure Jet
CA	600	Oil	Pressure Jet
CA	700	Oil	Pressure Jet
CA	800	Oil	Pressure Jet
CA	1000	Oil	Pressure Jet
CA	1500	Oil	Pressure Jet
CA	2000	Oil	Pressure Jet
PAG	60	Gas	Atmospheric
PAG	80	Gas	Atmospheric
PAG	100	Gas	Atmospheric
PAG	200	Gas	Atmospheric
EA	100	Gas/Oil	Pressure Jet
EA	150	Gas/Oil	Pressure Jet
EA	200	Gas/Oil	Pressure Jet
EA	300	Gas/Oil	Pressure Jet
EA	400	Gas/Oil	Pressure Jet
EA	500	Gas/Oil	Pressure Jet
EA	600	Gas/Oil	Pressure Jet
EA	700	Gas/Oil	Pressure Jet
EA	800	Gas/Oil	Pressure Jet
EA	1000	Gas/Oil	Pressure Jet
EA	1500	Gas/Oil	Pressure Jet



**Flue Size**
***Internal Dia mm***
***Internal use***
***External use***

125mm	Prima Plus	Prima Plus/ICS
150mm	Prima Plus	Prima Plus/ICS
150mm	Prima Plus	Prima Plus/ICS
180mm	Prima Plus	Prima Plus/ICS
180mm	Prima Plus	Prima Plus/ICS
180mm	Prima Plus	Prima Plus/ICS
200mm	Prima Plus	Prima Plus/ICS
200mm	Prima Plus	Prima Plus/ICS
300mm	Prima Plus	Prima Plus/ICS
300mm	Prima Plus	Prima Plus/ICS
125mm	Prima Plus	Prima Plus/ICS
125mm	Prima Plus	Prima Plus/ICS
125mm	Prima Plus	Prima Plus/ICS
150mm	Prima Plus	Prima Plus/ICS
150mm	Prima Plus	Prima Plus/ICS
180mm	Prima Plus	Prima Plus/ICS
180mm	Prima Plus	Prima Plus/ICS
180mm	Prima Plus	Prima Plus/ICS
200mm	Prima Plus	Prima Plus/ICS
200mm	Prima Plus	Prima Plus/ICS
300mm	Prima Plus	Prima Plus/ICS
300mm	Prima Plus	Prima Plus/ICS
125mm	Prima Plus	Prima Plus/ICS
125mm	Prima Plus	Prima Plus/ICS
150mm	Prima Plus	Prima Plus/ICS
200mm	Prima Plus	Prima Plus/ICS
125mm	Prima Plus	Prima Plus/ICS
125mm	Prima Plus	Prima Plus/ICS
125mm	Prima Plus	Prima Plus/ICS
150mm	Prima Plus	Prima Plus/ICS
150mm	Prima Plus	Prima Plus/ICS
180mm	Prima Plus	Prima Plus/ICS
180mm	Prima Plus	Prima Plus/ICS
180mm	Prima Plus	Prima Plus/ICS
200mm	Prima Plus	Prima Plus/ICS
200mm	Prima Plus	Prima Plus/ICS
300mm	Prima Plus	Prima Plus/ICS

**POWRMATIC HEATERS (continued)**

<b>Appliance</b>		<b>Appliance Operation</b>	
<i>Model</i>	<i>Size</i>	<i>Fuel</i>	<i>Burner Type</i>
OUH	20	Oil	Pressure Jet
OUH	30	Oil	Pressure Jet
OUH	45	Oil	Pressure Jet
OUH	60	Oil	Pressure Jet
PTU/PTS	09	Gas	Pre-mix
PTU/PTS	12	Gas	Pre-mix
PTU/PTS	15	Gas	Pre-mix
PTU/PTS	25	Gas	Pre-mix
PTU/PTS	30	Gas	Pre-mix
PTU/PTS	35	Gas	Pre-mix
PTU/PTS	40	Gas	Pre-mix
PTU/PTS	45	Gas	Pre-mix
PTD	09	Gas	Pre-mix
PTD	12	Gas	Pre-mix
PTD	15	Gas	Pre-mix
PTD	25	Gas	Pre-mix
PTD	30	Gas	Pre-mix
PTD	35	Gas	Pre-mix
PTD	40	Gas	Pre-mix
PTD	45	Gas	Pre-mix

**ROBERTS GORDON**

<b>Appliance</b>		<b>Appliance Operation</b>	
<i>Model</i>	<i>Size</i>	<i>Fuel</i>	<i>Burner Type</i>
Blackheat U-Tube	BH15UT	Gas	Pre-mix
Blackheat U-Tube	BH20UT	Gas	Pre-mix
Blackheat U-Tube	BH25UT	Gas	Pre-mix
Blackheat U-Tube	BH30UT	Gas	Pre-mix
Blackheat U-Tube	BH35UT	Gas	Pre-mix
Blackheat U-Tube	BH40UT	Gas	Pre-mix
Blackheat U-Tube	BH45UT	Gas	Pre-mix
Blackheat U-Tube	BH50UT	Gas	Pre-mix
Blackheat Linear	BH15ST	Gas	Pre-mix
Blackheat Linear	BH20ST	Gas	Pre-mix
Blackheat Linear	BH25ST	Gas	Pre-mix
Blackheat Linear	BH30ST	Gas	Pre-mix
Blackheat Linear	BH35ST	Gas	Pre-mix

**Flue Size**

<i>Internal Dia mm</i>	<i>Internal use</i>	<i>External use</i>
100mm	Prima Plus	Prima Plus/ICS
100mm	Prima Plus	Prima Plus/ICS
125mm	Prima Plus	Prima Plus/ICS
125mm	Prima Plus	Prima Plus/ICS
125mm	Prima Plus	Prima Plus/ICS
125mm	Prima Plus	Prima Plus/ICS
125mm	Prima Plus	Prima Plus/ICS
125mm	Prima Plus	Prima Plus/ICS
125mm	Prima Plus	Prima Plus/ICS
125mm	Prima Plus	Prima Plus/ICS
125mm	Prima Plus	Prima Plus/ICS
125mm	Prima Plus	Prima Plus/ICS
125mm	Prima Plus	Prima Plus/ICS
125mm	Prima Plus	Prima Plus/ICS
125mm	Prima Plus	Prima Plus/ICS
125mm	Prima Plus	Prima Plus/ICS
150mm	Prima Plus	Prima Plus/ICS
150mm	Prima Plus	Prima Plus/ICS
150mm	Prima Plus	Prima Plus/ICS
150mm	Prima Plus	Prima Plus/ICS
150mm	Prima Plus	Prima Plus/ICS

**Flue Size**

<i>Internal Dia mm</i>	<i>Internal use</i>	<i>External use</i>
100mm	Prima Plus	Prima Plus/ICS
100mm	Prima Plus	Prima Plus/ICS
100mm	Prima Plus	Prima Plus/ICS
100mm	Prima Plus	Prima Plus/ICS
100mm	Prima Plus	Prima Plus/ICS
100mm	Prima Plus	Prima Plus/ICS
100mm	Prima Plus	Prima Plus/ICS
100mm	Prima Plus	Prima Plus/ICS
100mm	Prima Plus	Prima Plus/ICS
100mm	Prima Plus	Prima Plus/ICS
100mm	Prima Plus	Prima Plus/ICS
100mm	Prima Plus	Prima Plus/ICS
100mm	Prima Plus	Prima Plus/ICS
100mm	Prima Plus	Prima Plus/ICS
100mm	Prima Plus	Prima Plus/ICS
100mm	Prima Plus	Prima Plus/ICS

**ROBERTS GORDON (continued)**

<b>Appliance</b>		<b>Appliance Operation</b>	
<b>Model</b>	<b>Size</b>	<b>Fuel</b>	<b>Burner Type</b>
Blackheat Linear	BH40ST	Gas	Pre-mix
Blackheat Linear	BH45ST	Gas	Pre-mix
Blackheat Linear	BH50ST	Gas	Pre-mix
Blackheat Double Linear	BH30DL	Gas	Pre-mix
Blackheat Double Linear	BH40DL	Gas	Pre-mix
Blackheat Double Linear	BH50DL	Gas	Pre-mix
Blackheat Double Linear	BH60DL	Gas	Pre-mix
Blackheat Double Linear	BH70DL	Gas	Pre-mix
Combat CTU	22	Gas	Pre-mix
Combat CTU	30	Gas	Pre-mix
Combat CTU	40	Gas	Pre-mix
Combat CTU	50	Gas	Pre-mix
Combat CTU	60	Gas	Pre-mix
Combat CTU	75	Gas	Pre-mix
Combat CTU	90	Gas	Pre-mix
Combat CTU	100	Gas	Pre-mix
Combat CTU	115	Gas	Pre-mix
Combat CTCU	7	Gas	Pre-mix
Combat CTCU	11	Gas	Pre-mix
Combat CTCU	15	Gas	Pre-mix
Combat CTCU	22	Gas	Pre-mix
Combat CTCU	27	Gas	Pre-mix
Combat CTCU	32	Gas	Pre-mix
Combat PGP/ECA	15	Gas	Pre-mix
Combat PGP/ECA	20	Gas	Pre-mix
Combat PGP/ECA	30	Gas	Pre-mix
Combat PGP/ECA	40	Gas	Pre-mix
Combat PGP/ECA	50	Gas	Pre-mix
Combat PGP/ECA	60	Gas	Pre-mix
Combat PGP/ECA	70	Gas	Pre-mix
Combat PGP/ECA	80	Gas	Pre-mix
Combat PGP/ECA	100	Gas	Pre-mix
Combat POP/ECA	15	Oil	Pressure Jet
Combat POP/ECA	20	Oil	Pressure Jet
Combat POP/ECA	30	Oil	Pressure Jet
Combat POP/ECA	40	Oil	Pressure Jet
Combat POP/ECA	50	Oil	Pressure Jet

<b>Flue Size</b>		
<b>Internal Dia mm</b>	<b>Internal use</b>	<b>External use</b>
100mm	Prima Plus	Prima Plus/ICS
100mm	Prima Plus	Prima Plus/ICS
100mm	Prima Plus	Prima Plus/ICS
100mm	Prima Plus	Prima Plus/ICS
100mm	Prima Plus	Prima Plus/ICS
100mm	Prima Plus	Prima Plus/ICS
100mm	Prima Plus	Prima Plus/ICS
100mm	Prima Plus	Prima Plus/ICS
100mm	Prima Plus	Prima Plus/ICS
100mm	Prima Plus	Prima Plus/ICS
100mm	Prima Plus	Prima Plus/ICS
100mm	Prima Plus	Prima Plus/ICS
100mm	Prima Plus	Prima Plus/ICS
100mm	Prima Plus	Prima Plus/ICS
100mm	Prima Plus	Prima Plus/ICS
100mm	Prima Plus	Prima Plus/ICS
100mm	Prima Plus	Prima Plus/ICS
100mm	Prima Plus	Prima Plus/ICS
100mm	Prima Plus	Prima Plus/ICS
100mm	Prima Plus	Prima Plus/ICS
80mm	Prima Plus	Prima Plus/ICS
80mm	Prima Plus	Prima Plus/ICS
80mm	Prima Plus	Prima Plus/ICS
80mm	Prima Plus	Prima Plus/ICS
100mm	Prima Plus	Prima Plus/ICS
100mm	Prima Plus	Prima Plus/ICS
180mm	Prima Plus	Prima Plus/ICS
180mm	Prima Plus	Prima Plus/ICS
180mm	Prima Plus	Prima Plus/ICS
180mm	Prima Plus	Prima Plus/ICS
230mm	Prima Plus	Prima Plus/ICS
230mm	Prima Plus	Prima Plus/ICS
230mm	Prima Plus	Prima Plus/ICS
230mm	Prima Plus	Prima Plus/ICS
230mm	Prima Plus	Prima Plus/ICS
180mm	Prima Plus	Prima Plus/ICS
180mm	Prima Plus	Prima Plus/ICS
180mm	Prima Plus	Prima Plus/ICS
180mm	Prima Plus	Prima Plus/ICS
230mm	Prima Plus	Prima Plus/ICS

**ROBERTS GORDON (continued)**

<b>Appliance</b>		<b>Appliance Operation</b>	
<i>Model</i>	<i>Size</i>	<i>Fuel</i>	<i>Burner Type</i>
Combat POP/ECA	60	Oil	Pressure Jet
Combat POP/ECA	70	Oil	Pressure Jet
Combat POP/ECA	80	Oil	Pressure Jet
Combat POP/ECA	100	Oil	Pressure Jet
Combat High Flow	HF30/40/50	Gas	Pressure Jet
Combat High Flow	HF30/40/50	Oil	Pressure Jet
Dual Air DAT	75/90/100/115	Gas	Pre-mix

**ACV BOILERS**

<b>Appliance</b>		<b>Appliance Operation</b>	
<i>Model</i>	<i>Size</i>	<i>Fuel</i>	<i>Burner Type</i>
Heatmaster	30N	Oil/Gas	Pre-mix/Pressure Jet
Heatmaster	60N	Oil/Gas	Pre-mix/Pressure Jet
Heatmaster	70N	Oil/Gas	Pre-mix/Pressure Jet
Heatmaster	71	Gas	Pre-mix
Heatmaster	100N	Oil/Gas	Pre-mix/Pressure Jet
Heatmaster	101	Gas	Pre-mix
Heatmaster	200N	Oil/Gas	Pressure Jet
Heatmaster	201	Gas	Pre-mix
Heatmaster	35TC	Gas	Condensing
Heatmaster	85TC	Gas	Condensing
Delta	25	Oil/Gas	Pre-mix/Pressure Jet
Delta	35	Oil/Gas	Pre-mix/Pressure Jet
Delta	45	Oil/Gas	Pre-mix/Pressure Jet
Delta	55	Oil/Gas	Pre-mix/Pressure Jet
Delta	35MV	Gas	Pre-mix
Delta	35FV	Oil	Pressure Jet
Delta	50MV	Gas	Pre-mix
Delta	50FV	Oil	Pressure Jet
Prestige	24/32	Gas	Condensing
Prestige	50	Gas	Condensing
Prestige	75	Gas	Condensing
Prestige	120	Gas	Condensing
N	Mini	Oil/Gas	Pressure Jet
N	1	Oil/Gas	Pressure Jet
N	2	Oil/Gas	Pressure Jet
N	3	Oil/Gas	Pressure Jet

<b>Flue Size</b>		
<b><i>Internal Dia mm</i></b>	<b><i>Internal use</i></b>	<b><i>External use</i></b>
230mm	Prima Plus	Prima Plus/ICS
230mm	Prima Plus	Prima Plus/ICS
230mm	Prima Plus	Prima Plus/ICS
230mm	Prima Plus	Prima Plus/ICS
180mm	Prima Plus	Prima Plus/ICS
180mm	Prima Plus	Prima Plus/ICS
130mm	Prima Plus	Prima Plus/ICS

<b>Flue Size</b>		
<b><i>Internal Dia mm</i></b>	<b><i>Internal use</i></b>	<b><i>External use</i></b>
150mm	ICS	ICS
150mm	ICS	ICS
150mm	ICS	ICS
150mm	ICS	ICS
150mm	ICS	ICS
150mm	ICS	ICS
250mm	ICS	ICS
250mm	ICS	ICS
80mm	Prima Plus	ICS Plus
100mm	Prima Plus	ICS Plus
150mm	ICS	ICS
150mm	ICS	ICS
150mm	ICS	ICS
150mm	ICS	ICS
80mm	ICS	ICS
80mm	ICS	ICS
100mm	ICS	ICS
100mm	ICS	ICS
80mm	Prima Plus	ICS Plus
100mm	Prima Plus	ICS Plus
100mm	Prima Plus	ICS Plus
150mm	Prima Plus	ICS Plus
80mm	ICS	ICS
130mm	ICS	ICS
130mm	ICS	ICS
150mm	ICS	ICS

**ACV BOILERS (continued)**

<b>Appliance</b>		<b>Appliance Operation</b>	
<i>Model</i>	<i>Size</i>	<i>Fuel</i>	<i>Burner Type</i>
CA	100	Oil/Gas	Pressure Jet
CA	150	Oil/Gas	Pressure Jet
CA	200	Oil/Gas	Pressure Jet
CA	250	Oil/Gas	Pressure Jet
CA	300	Oil/Gas	Pressure Jet
CA	350	Oil/Gas	Pressure Jet
CA	400	Oil/Gas	Pressure Jet
CA	500	Oil/Gas	Pressure Jet
CA	600	Oil/Gas	Pressure Jet
CA	700	Oil/Gas	Pressure Jet
CA	800	Oil/Gas	Pressure Jet
CA	900	Oil/Gas	Pressure Jet
CA	1000	Oil/Gas	Pressure Jet

**HOVAL**

<b>Appliance</b>		<b>Appliance Operation</b>	
<i>Model</i>	<i>Size</i>	<i>Fuel</i>	<i>Burner Type</i>
UltraGas AM c	15	Gas	Pre-mix
UltraGas AM c	20	Gas	Pre-mix
UltraGas AM c	27	Gas	Pre-mix
UltraGas AM c	35	Gas	Pre-mix
UltraGas AM c	50	Gas	Pre-mix
UltraGas AM c	70	Gas	Pre-mix
UltraGas AM c	90	Gas	Pre-mix
UltraGas AM c	125	Gas	Pre-mix
UltraGas AM c	150	Gas	Pre-mix
UltraGas AM c	200	Gas	Pre-mix
UltraGas AM c	250	Gas	Pre-mix
UltraGas AM c	300	Gas	Pre-mix
UltraGas AM c	350	Gas	Pre-mix
UltraGas AM c	400	Gas	Pre-mix
UltraGas AM c	450	Gas	Pre-mix
UltraGas AM c	500	Gas	Pre-mix
UltraGas AM c	575	Gas	Pre-mix
UltraGas AM c	650	Gas	Pre-mix
UltraGas AM c	720	Gas	Pre-mix
UltraGas AM c	250D	Gas	Pre-mix



<b>Flue Size</b>		
<i>Internal Dia mm</i>	<i>Internal use</i>	<i>External use</i>
200mm	ICS	ICS
200mm	ICS	ICS
200mm	ICS	ICS
250mm	ICS	ICS
250mm	ICS	ICS
250mm	ICS	ICS
300mm	ICS	ICS
300mm	ICS	ICS
355mm	ICS	ICS
355mm	ICS	ICS
455mm	ICS	ICS
455mm	ICS	ICS
455mm	ICS	ICS

<b>Flue Size</b>		
<i>Internal Dia mm</i>	<i>Internal use</i>	<i>External use</i>
C100/150	Supplied By Hoval	Supplied By Hoval
C100/150	Supplied By Hoval	Supplied By Hoval
C100/150	Supplied By Hoval	Supplied By Hoval
C100/150	Supplied By Hoval	Supplied By Hoval
C100/150	Supplied By Hoval	Supplied By Hoval
C100/150	Supplied By Hoval	Supplied By Hoval
C100/150	Supplied By Hoval	Supplied By Hoval
155mm	Prima Plus	ICS Plus
155mm	Prima Plus	ICS Plus
252mm	Prima Plus	ICS Plus
252mm	Prima Plus	ICS Plus
252mm	Prima Plus	ICS Plus
302mm	Prima Plus	ICS Plus
302mm	Prima Plus	ICS Plus
302mm	Prima Plus	ICS Plus
302mm	Prima Plus	ICS Plus
302mm	Prima Plus	ICS Plus
302mm	Prima Plus	ICS Plus
302mm	Prima Plus	ICS Plus
254mm	Prima Plus	ICS Plus

**HOVAL (continued)**

<b>Appliance</b>		<b>Appliance Operation</b>	
<i>Model</i>	<i>Size</i>	<i>Fuel</i>	<i>Burner Type</i>
UltraGas AM c	300D	Gas	Pre-mix
UltraGas AM c	400D	Gas	Pre-mix
UltraGas AM c	500D	Gas	Pre-mix
UltraGas AM c	600D	Gas	Pre-mix
UltraGas AM c	700D	Gas	Pre-mix
UltraGas AM c	800D	Gas	Pre-mix
UltraGas AM c	900D	Gas	Pre-mix
UltraGas AM c	1000D	Gas	Pre-mix
UltraGas AM c	1150D	Gas	Pre-mix
UltraGas AM c	1300D	Gas	Pre-mix
UltraGas AM c	1440D	Gas	Pre-mix
MultiJet	16	Oil	Pressure Jet
MultiJet	20	Oil	Pressure Jet
MultiJet	25	Oil	Pressure Jet
UltraOil	35	Oil	Pressure Jet
UltraOil	50	Oil	Pressure Jet
UltraOil	80	Oil	Pressure Jet
AtmoGas AG	AG55	Gas	Atmospheric
AtmoGas AG	AG64	Gas	Atmospheric
AtmoGas AG	AG71	Gas	Atmospheric
AtmoGas AG	AG82	Gas	Atmospheric
AtmoGas AG	AG91	Gas	Atmospheric
AtmoGas AG	AG100	Gas	Atmospheric
AtmoGas AG	AG109	Gas	Atmospheric
AtmoGas AG	AG118	Gas	Atmospheric
AtmoGas AG Low NOx	AG55-LN	Gas	Atmospheric
AtmoGas AG Low NOx	AG64-LN	Gas	Atmospheric
AtmoGas AG Low NOx	AG71-LN	Gas	Atmospheric
AtmoGas AG Low NOx	AG82-LN	Gas	Atmospheric
AtmoGas AG Low NOx	AG91-LN	Gas	Atmospheric
AtmoGas AG Low NOx	AG100-LN	Gas	Atmospheric
AtmoGas AG Low NOx	AG109-LN	Gas	Atmospheric
AtmoGas AG Low NOx	AG118-LN	Gas	Atmospheric
AtmoGas AG	AG142	Gas	Atmospheric
AtmoGas AG	AG162	Gas	Atmospheric
AtmoGas AG	AG182	Gas	Atmospheric
AtmoGas AG	AG202	Gas	Atmospheric

**Flue Size**

<i>Internal Dia mm</i>	<i>Internal use</i>	<i>External use</i>
------------------------	---------------------	---------------------

254mm	Prima Plus	ICS Plus
306mm	Prima Plus	ICS Plus
306mm	Prima Plus	ICS Plus
306mm	Prima Plus	ICS Plus
356mm	Prima Plus	ICS Plus
356mm	Prima Plus	ICS Plus
356mm	Prima Plus	ICS Plus
356mm	Prima Plus	ICS Plus
356mm	Prima Plus	ICS Plus
356mm	Prima Plus	ICS Plus
356mm	Prima Plus	ICS Plus
C80/125	Supplied by Hoval	Supplied by Hoval
127mm	Prima Plus	ICS Plus
127mm	Prima Plus	ICS Plus
C100/150	Supplied by Hoval	Supplied by Hoval
C100/150	Supplied by Hoval	Supplied by Hoval
155mm	Prima Plus	ICS Plus
180mm	Commercial B Vent	ICS
180mm	Commercial B Vent	ICS
180mm	Commercial B Vent	ICS
200mm	Commercial B Vent	ICS
200mm	Commercial B Vent	ICS
200mm	Commercial B Vent	ICS
220mm	Commercial B Vent	ICS
220mm	Commercial B Vent	ICS
180mm	Commercial B Vent	ICS
180mm	Commercial B Vent	ICS
180mm	Commercial B Vent	ICS
200mm	Commercial B Vent	ICS
200mm	Commercial B Vent	ICS
200mm	Commercial B Vent	ICS
220mm	Commercial B Vent	ICS
220mm	Commercial B Vent	ICS
250mm	Commercial B Vent	ICS
250mm	Commercial B Vent	ICS
300mm	Commercial B Vent	ICS
300mm	Commercial B Vent	ICS

**HOVAL (continued)**

<b>Appliance</b>		<b>Appliance Operation</b>	
<b>Model</b>	<b>Size</b>	<b>Fuel</b>	<b>Burner Type</b>
AtmoGas AG	AG222	Gas	Atmospheric
AtmoGas AG	AG262	Gas	Atmospheric
AtmoGas AG	AG302	Gas	Atmospheric
AtmoGas AG	AG342	Gas	Atmospheric
AtmoGas AG	AG382	Gas	Atmospheric
AtmoGas AG Low NOx	AG126-LN	Gas	Atmospheric
AtmoGas AG Low NOx	AG144-LN	Gas	Atmospheric
AtmoGas AG Low NOx	AG162-LN	Gas	Atmospheric
AtmoGas AG Low NOx	AG180-LN	Gas	Atmospheric
AtmoGas AG Low NOx	AG198-LN	Gas	Atmospheric
AtmoGas AG Low NOx	AG234-LN	Gas	Atmospheric
AtmoGas AG Low NOx	AG270-LN	Gas	Atmospheric
AtmoGas AG Low NOx	AG306-LN	Gas	Atmospheric
AtmoGas AG Low NOx	AG342-LN	Gas	Atmospheric
Mini-3	18	Gas/Oil	Pressure Jet
Mini-3	25	Gas/Oil	Pressure Jet
Mini-3	32	Gas/Oil	Pressure Jet
Mini-3	36	Gas/Oil	Pressure Jet
Mini-3	39	Gas/Oil	Pressure Jet
Uno-3	50	Gas/Oil	Pressure Jet
Uno-3	62	Gas/Oil	Pressure Jet
Uno-3	75	Gas/Oil	Pressure Jet
Uno-3	90	Gas/Oil	Pressure Jet
Uno-3	110	Gas/Oil	Pressure Jet
Uno-3	125	Gas/Oil	Pressure Jet
Uno-3	150	Gas/Oil	Pressure Jet
Uno-3	175	Gas/Oil	Pressure Jet
Uno-3	220	Gas/Oil	Pressure Jet
Uno-3	250	Gas/Oil	Pressure Jet
Uno-3	280	Gas/Oil	Pressure Jet
Equinox	406	Gas/Oil	Pressure Jet
Equinox	464	Gas/Oil	Pressure Jet
Equinox	522	Gas/Oil	Pressure Jet
Equinox	580	Gas/Oil	Pressure Jet
Equinox	638	Gas/Oil	Pressure Jet
Equinox	696	Gas/Oil	Pressure Jet
Equinox	754	Gas/Oil	Pressure Jet

<b>Flue Size</b>		
<b><i>Internal Dia mm</i></b>	<b><i>Internal use</i></b>	<b><i>External use</i></b>
300mm	Commercial B Vent	ICS
350mm	Commercial B Vent	ICS
350mm	Commercial B Vent	ICS
350mm	Commercial B Vent	ICS
400mm	Commercial B Vent	ICS
250mm	Commercial B Vent	ICS
250mm	Commercial B Vent	ICS
300mm	Commercial B Vent	ICS
300mm	Commercial B Vent	ICS
300mm	Commercial B Vent	ICS
350mm	ICS	ICS
350mm	ICS	ICS
350mm	ICS	ICS
400mm	ICS	ICS
129mm	ICS	ICS
129mm	ICS	ICS
129mm	ICS	ICS
129mm	ICS	ICS
129mm	ICS	ICS
149mm	ICS	ICS
149mm	ICS	ICS
149mm	ICS	ICS
149mm	ICS	ICS
179mm	ICS	ICS
179mm	ICS	ICS
179mm	ICS	ICS
199mm	ICS	ICS
199mm	ICS	ICS
249mm	ICS	ICS
249mm	ICS	ICS
300mm	ICS	ICS
300mm	ICS	ICS
300mm	ICS	ICS
350mm	ICS	ICS
350mm	ICS	ICS
350mm	ICS	ICS
350mm	ICS	ICS

**HOVAL (continued)**

<b>Appliance</b>		<b>Appliance Operation</b>	
<b>Model</b>	<b>Size</b>	<b>Fuel</b>	<b>Burner Type</b>
Equinox	812	Gas/Oil	Pressure Jet
Equinox	870	Gas/Oil	Pressure Jet
Equinox	928	Gas/Oil	Pressure Jet
Equinox	986	Gas/Oil	Pressure Jet
Equinox	1044	Gas/Oil	Pressure Jet
Equinox	1102	Gas/Oil	Pressure Jet
Equinox	1160	Gas/Oil	Pressure Jet
SR-plus	50	Gas/Oil	Pressure Jet
SR-plus	75	Gas/Oil	Pressure Jet
SR-plus	100	Gas/Oil	Pressure Jet
SR-plus	125	Gas/Oil	Pressure Jet
SR-plus	150	Gas/Oil	Pressure Jet
SR-plus	175	Gas/Oil	Pressure Jet
SR-plus	200	Gas/Oil	Pressure Jet
SR-plus	225	Gas/Oil	Pressure Jet
SR-plus	250	Gas/Oil	Pressure Jet
SR-plus	275	Gas/Oil	Pressure Jet
SR-plus	300	Gas/Oil	Pressure Jet
SR-plus	325	Gas/Oil	Pressure Jet
SR-plus	350	Gas/Oil	Pressure Jet
SR-plus	400	Gas/Oil	Pressure Jet
SR-plus	500	Gas/Oil	Pressure Jet
SR-plus	600	Gas/Oil	Pressure Jet
SR-plus	700	Gas/Oil	Pressure Jet
SR-plus	800	Gas/Oil	Pressure Jet
SR-plus	900	Gas/Oil	Pressure Jet
SR-plus	1000	Gas/Oil	Pressure Jet
SR-plus	1100	Gas/Oil	Pressure Jet
SR-plus	1200	Gas/Oil	Pressure Jet
SR-plus	1300	Gas/Oil	Pressure Jet
SR-plus	1400	Gas/Oil	Pressure Jet
SR-plus	1500	Gas/Oil	Pressure Jet
SR-plus	1750	Gas/Oil	Pressure Jet
SR-plus	2000	Gas/Oil	Pressure Jet
SR-plus	2250	Gas/Oil	Pressure Jet
SR-plus	2500	Gas/Oil	Pressure Jet
SR-plus	2750	Gas/Oil	Pressure Jet

<b>Flue Size</b>		
<b><i>Internal Dia mm</i></b>	<b><i>Internal use</i></b>	<b><i>External use</i></b>
400mm	ICS	ICS
400mm	ICS	ICS
400mm	ICS	ICS
400mm	ICS	ICS
400mm	ICS	ICS
400mm	ICS	ICS
400mm	ICS	ICS
180mm	ICS	ICS
180mm	ICS	ICS
180mm	ICS	ICS
180mm	ICS	ICS
200mm	ICS	ICS
200mm	ICS	ICS
200mm	ICS	ICS
200mm	ICS	ICS
225mm	ICS	ICS
225mm	ICS	ICS
225mm	ICS	ICS
225mm	ICS	ICS
225mm	ICS	ICS
225mm	ICS	ICS
250mm	ICS	ICS
250mm	ICS	ICS
300mm	ICS	ICS
300mm	ICS	ICS
300mm	ICS	ICS
350mm	ICS	ICS
350mm	ICS	ICS
350mm	ICS	ICS
400mm	ICS	ICS
400mm	ICS	ICS
400mm	ICS	ICS
400mm	ICS	ICS
450mm	ICS	ICS
450mm	ICS	ICS
450mm	ICS	ICS
475mm	ICS	ICS

**HOVAL (continued)**

<b>Appliance</b>		<b>Appliance Operation</b>	
<i>Model</i>	<i>Size</i>	<i>Fuel</i>	<i>Burner Type</i>
SR-plus	3000	Gas/Oil	Pressure Jet
Cosmo	175	Gas/Oil	Pressure Jet
Cosmo	240	Gas/Oil	Pressure Jet
Cosmo	290	Gas/Oil	Pressure Jet
Cosmo	350	Gas/Oil	Pressure Jet
Cosmo	410	Gas/Oil	Pressure Jet
Cosmo	465	Gas/Oil	Pressure Jet
Cosmo	585	Gas/Oil	Pressure Jet
Cosmo	700	Gas/Oil	Pressure Jet
Cosmo	850	Gas/Oil	Pressure Jet
Cosmo	950	Gas/Oil	Pressure Jet
Cosmo	1050	Gas/Oil	Pressure Jet
Cosmo	1200	Gas/Oil	Pressure Jet
Cosmo	1450	Gas/Oil	Pressure Jet
Cosmo	1800	Gas/Oil	Pressure Jet
Cosmo	2000	Gas/Oil	Pressure Jet
Cosmo	2500	Gas/Oil	Pressure Jet
Cosmo	3000	Gas/Oil	Pressure Jet
Cosmo	3500	Gas/Oil	Pressure Jet
Cosmo	4000	Gas/Oil	Pressure Jet
DF Water Heater	115	Gas	Atmospheric
	165	Gas	Atmospheric
	225	Gas	Atmospheric
	300	Gas	Atmospheric

**HAMWORTHY HEATING LTD**

<b>Appliance</b>		<b>Appliance Operation</b>	
<i>Model</i>	<i>Size</i>	<i>Fuel</i>	<i>Burner Type</i>
Purewell Integra	PI 40, 70, 100	Gas	Atmospheric
Purewell Classic	PC 40, 50, 60, 70, 80	Gas	Atmospheric
Purewell Classic	PC 95, 105, 120	Gas	Atmospheric
Purewell Variheat he	PV 65he, 85he, 105he, 125he	Nat. Gas	Modulating Pre-mix
Purewell Variheat c (Condensing)	PV 70c, 95c, 110c, 140c, 180c	Nat. Gas	Modulating Pre-mix
Warmwell (Condensing)	W 60, 80, 95, 120, 140	Gas	Fan Assisted Atmospheric



<b>Flue Size</b>		
<i>Internal Dia mm</i>	<i>Internal use</i>	<i>External use</i>
500mm	ICS	ICS
250mm	ICS	ICS
250mm	ICS	ICS
250mm	ICS	ICS
300mm	ICS	ICS
300mm	ICS	ICS
300mm	ICS	ICS
350mm	ICS	ICS
350mm	ICS	ICS
350mm	ICS	ICS
400mm	ICS	ICS
400mm	ICS	ICS
400mm	ICS	ICS
400mm	ICS	ICS
450mm	ICS	ICS
450mm	ICS	ICS
450mm	ICS	ICS
650mm	ICS	ICS
650mm	ICS	ICS
650mm	ICS	ICS
130mm	B Vent	K Vent/ICS
155mm	B Vent	K Vent/ICS
180mm	Commercial B Vent	ICS
230mm	Commercial B Vent	ICS

<b>Flue Size</b>		
<i>Internal Dia mm</i>	<i>Internal use</i>	<i>External use</i>
206mm	Commercial B Vent	ICS
206mm	Commercial B Vent	ICS
256mm	Commercial B Vent	ICS
100mm	Prima Plus/ICS Plus	ICS Plus
150mm	Prima Plus/ICS Plus	ICS Plus
152mm	Prima Plus/ICS Plus	ICS Plus

## HAMWORTHY HEATING LTD (continued)

Appliance		Appliance Operation	
Model	Size	Fuel	Burner Type
Sherborne SE	S 65	Gas	Modulating Pre-mix
(Flue System Type B23 Only)			
Sherborne SE (Condensing)	S 70c	Gas	Modulating Pre-mix
(Flue System Type B23 Only)			
Wessex HE 50	1 x 50H	Gas	Pre-mix
	2 x 50H	Gas	Pre-mix
	3 50H	Gas	Pre-mix
Wessex HE Compact	Compact 50, 100	Gas	Pre-mix
Wessex HE 200	200	Gas	Pre-mix
Wessex HE County	200, 400	Gas	Pre-mix
Wessex 100M Series	M100	Gas	Pre-mix
	M200	Gas	Pre-mix
	M300	Gas	Pre-mix
Wessex Modumax he Series	WM 110he	Nat. Gas	Modulating Pre-mix
	WM 160he, 220he	Nat. Gas	Modulating Pre-mix
Wessex Modumax c Series (Condensing)	WM 100c, 120c	Nat. Gas	Modulating Pre-mix
	WM 150c, 200c, 250c	Nat. Gas	Modulating Pre-mix
Lilliput HE	HE 65, 90	Gas/Oil	Pressure Jet
Broadstone S	S 110, 120, 130	N. Gas/Oil	Pressure Jet
Shaftesbury Slimline	S 150, 190, 220, 250,	N. Gas/Oil	Pressure Jet
	270, 290		
Shaftesbury HE	HE 110, 150, 190, 220,	Gas/Oil	Pressure Jet
	250, 280, 310, 340,		
	370, 400		
Wimborne MS	MS 7, 8, 9, 10	N. Gas/Oil	Pressure Jet
	MS 11, 12, 13, 14	N. Gas/Oil	Pressure Jet
Ansty (Condensing)	AS75, 90, 120	Nat. Gas	Pressure Jet
	AS160, 220	Nat. Gas	Pressure Jet
	AS270, 320	Nat. Gas	Pressure Jet
Dorchester DR-LP and DR-LA	30, 40	Gas	Atmospheric
	45, 60	Gas	Atmospheric
	75, 95, 110	Gas	Atmospheric
Dorchester DR-SE and DR-SA	16, 19	Gas	Atmospheric
Dorchester DR-PF	55	Gas/Oil	Pressure Jet
	65, 75, 95, 115	Gas/Oil	Pressure Jet
	145	Gas/Oil	Pressure Jet

**Flue Size**

<b>Internal Dia mm</b>	<b>Internal use</b>	<b>External use</b>
100mm	Supplied by Hamworthy	Supplied by Hamworthy
100mm	Supplied by Hamworthy	Supplied by Hamworthy
184mm	ICS	ICS
238mm	ICS	ICS
288mm	ICS	ICS
238mm	ICS	ICS
344mm	ICS	ICS
358mm	ICS	ICS
102mm	ICS	ICS
152mm	ICS	ICS
204mm	ICS	ICS
180mm	ICS	ICS
250mm	ICS	ICS
180mm	Prima Plus / ICS Plus	ICS Plus
250mm	ICS	ICS
180mm	ICS	ICS
200mm	ICS	ICS
248mm	ICS	ICS
180mm	ICS	ICS
	ICS	ICS
	ICS	ICS
350mm	ICS	ICS
400mm	ICS	ICS
151mm	ICS	ICS
181mm	ICS	ICS
201mm	ICS	ICS
150mm	B Vent	K Vent/ICS
180mm	Commercial B Vent	ICS
225mm	Commercial B Vent	ICS
130mm	B Vent	K Vent/ICS
150mm	ICS	ICS
200mm	ICS	ICS
250mm	ICS	ICS

## BROAG REMEHA

Appliance		Appliance Operation	
<i>Model</i>	<i>Size</i>	<i>Fuel</i>	<i>Burner Type</i>
Avanta Wall Hung System Boiler	18 V	Gas/ LPG	Condensing
Avanta Wall Hung System Boiler	24 S	Gas/ LPG	Condensing
Avanta Wall Hung Combination Boiler	28 C	Gas/ LPG	Condensing
Avanta Wall Hung Combination Boiler	35 C	Gas/ LPG	Condensing
Avanta Wall Hung Combination Boiler	39 C	Gas/ LPG	Condensing
Quinta Wall Hung System Boiler	30	Gas/ LPG	Condensing
Quinta Wall Hung System Boiler	45	Gas/ LPG	Condensing
Quinta Wall Hung System Boiler	65	Gas/ LPG	Condensing
Quinta Wall Hung System Boiler	85	Gas/ LPG	Condensing
	(Cascade Available)		
Quinta Wall Hung System Boiler	115	Gas	Condensing
	(Cascade Available)		
Gas 210 ECO	3	Gas	Condensing
Gas 210 ECO	4	Gas	Condensing
Gas 210 ECO	5	Gas	Condensing
Gas 210 ECO	6	Gas	Condensing
Gas 310 ECO	5	Gas	Condensing
Gas 310 ECO	6	Gas	Condensing
Gas 310 ECO	7	Gas	Condensing
Gas 310 ECO	8	Gas	Condensing
Gas 310 ECO	9	Gas	Condensing
Gas 610 ECO	6	Gas	Condensing
Gas 610 ECO	7	Gas	Condensing
Gas 610 ECO	8	Gas	Condensing
Gas 610 ECO	9	Gas	Condensing
Gas 360	8	Gas/ Opt LPG	Atmospheric
Gas 360	10	Gas/ Opt LPG	Atmospheric
Gas 360	12	Gas/ Opt LPG	Atmospheric
Gas 360	14	Gas/ Opt LPG	Atmospheric
Gas 460	8	Gas	Atmospheric
Gas 460	10	Gas	Atmospheric
Gas 460	12	Gas	Atmospheric
Gas 460	14	Gas	Atmospheric
Gas 460	16	Gas	Atmospheric

**Flue Size**

<i>Internal Dia mm</i>	<i>Internal use</i>	<i>External use</i>
60/100 or 80/125	Supplied by Broag	Supplied by Broag
60/100 or 80/125	Supplied by Broag	Supplied by Broag
60/100 or 80/125	Supplied by Broag	Supplied by Broag
60/100 or 80/125	Supplied by Broag	Supplied by Broag
60/100 or 80/125	Supplied by Broag	Supplied by Broag
60/100 or 80/125	Supplied by Broag	Supplied by Broag
100mm	Prima Plus/ICS Plus	ICS Plus
100mm	Prima Plus/ICS Plus	ICS Plus
100mm	Prima Plus/ICS Plus	ICS Plus
100mm	Prima Plus/ICS Plus	ICS Plus
110mm	Prima Plus/ICS Plus	ICS Plus
150mm	Prima Plus/ICS Plus	ICS Plus
150mm	Prima Plus/ICS Plus	ICS Plus
150mm	Prima Plus/ICS Plus	ICS Plus
150mm	Prima Plus/ICS Plus	ICS Plus
250mm	Prima Plus/ICS Plus	ICS Plus
250mm	Prima Plus/ICS Plus	ICS Plus
250mm	Prima Plus/ICS Plus	ICS Plus
250mm	Prima Plus/ICS Plus	ICS Plus
250mm	Prima Plus/ICS Plus	ICS Plus
250mm	Prima Plus/ICS Plus	ICS Plus
250mm	Prima Plus/ICS Plus	ICS Plus
350mm	Prima Plus/ICS Plus	ICS Plus
350mm	Prima Plus/ICS Plus	ICS Plus
350mm	Prima Plus/ICS Plus	ICS Plus
350mm	Prima Plus/ICS Plus	ICS Plus
180mm	Commercial B Vent	ICS
200mm	Commercial B Vent	ICS
200mm	Commercial B Vent	ICS
225mm	Commercial B Vent	ICS
250mm	Commercial B Vent	ICS
300mm	Commercial B Vent	ICS
300mm	Commercial B Vent	ICS
350mm	ICS	ICS
350mm	ICS	ICS

**BROAG REMEHA (continued)**

<b>Appliance</b>		<b>Appliance Operation</b>	
<b>Model</b>	<b>Size</b>	<b>Fuel</b>	<b>Burner Type</b>
Gas 460	18	Gas	Atmospheric
Gas 460	20	Gas	Atmospheric
P320	4	Gas/LPG/Oil/ Dual	Pressure Jet
P320	5	Gas/LPG/Oil/ Dual	Pressure Jet
P320	6	Gas/LPG/Oil/ Dual	Pressure Jet
P320	7	Gas/LPG/Oil/ Dual	Pressure Jet
P320	8	Gas/LPG/Oil/ Dual	Pressure Jet
P320	9	Gas/LPG/Oil/ Dual	Pressure Jet
P420	8	Gas/LPG/Oil/ Dual	Pressure Jet
P420	9	Gas/LPG/Oil/ Dual	Pressure Jet
P420	10	Gas/LPG/Oil/ Dual	Pressure Jet
P420	11	Gas/LPG/Oil/ Dual	Pressure Jet
P420	12	Gas/LPG/Oil/ Dual	Pressure Jet
P420	13	Gas/LPG/Oil/ Dual	Pressure Jet
P420	14	Gas/LPG/Oil/ Dual	Pressure Jet
P520	13	Gas/LPG/Oil/ Dual	Pressure Jet
P520	15	Gas/LPG/Oil/ Dual	Pressure Jet
P520	17	Gas/LPG/Oil/ Dual	Pressure Jet
P520	19	Gas/LPG/Oil/ Dual	Pressure Jet
P520	21	Gas/LPG/Oil/ Dual	Pressure Jet
P520	23	Gas/LPG/Oil/ Dual	Pressure Jet
P520	25	Gas/LPG/Oil/ Dual	Pressure Jet
Biomass	HPK RA 15	Wood Chip/ Pellet	Auger Feed
Biomass	HPK RA 20	Wood Chip/ Pellet	Auger Feed
Biomass	HPK RA 25	Wood Chip/ Pellet	Auger Feed
Biomass	HPK RA 30	Wood Chip/ Pellet	Auger Feed
Biomass	HPK RA 35	Wood Chip/ Pellet	Auger Feed
Biomass	HPK RA 40	Wood Chip/ Pellet	Auger Feed
Biomass	HPK RA 45	Wood Chip/ Pellet	Auger Feed
Biomass	HPK RA 49	Wood Chip/ Pellet	Auger Feed
Biomass	HPK RA 60	Wood Chip/ Pellet	Auger Feed
Biomass	HPK RA 70	Wood Chip/ Pellet	Auger Feed
Biomass	HPK RA 75	Wood Chip/ Pellet	Auger Feed
Biomass	HPK RA 85	Wood Chip/ Pellet	Auger Feed
Biomass	HPK RA 95	Wood Chip/ Pellet	Auger Feed
Biomass	HPK RA 100	Wood Chip/ Pellet	Auger Feed
Biomass	HPK RA 120	Wood Chip/ Pellet	Auger Feed
Biomass	HPK RA 145	Wood Chip/ Pellet	Auger Feed

**Flue Size**

<i>Internal Dia mm</i>	<i>Internal use</i>	<i>External use</i>
350mm	ICS	ICS
400mm	ICS	ICS
180mm	ICS	ICS
180mm	ICS	ICS
180mm	ICS	ICS
200mm	ICS	ICS
200mm	ICS	ICS
200mm	ICS	ICS
250mm	ICS	ICS
250mm	ICS	ICS
250mm	ICS	ICS
300mm	ICS	ICS
300mm	ICS	ICS
300mm	ICS	ICS
300mm	ICS	ICS
350mm	ICS	ICS
400mm	ICS	ICS
400mm	ICS	ICS
400mm	ICS	ICS
400mm	ICS	ICS
400mm	ICS	ICS
400mm	ICS	ICS
160mm	ICS	ICS
160mm	ICS	ICS
160mm	ICS	ICS
180mm	ICS	ICS
180mm	ICS	ICS
180mm	ICS	ICS
180mm	ICS	ICS
200mm	ICS	ICS
200mm	ICS	ICS
200mm	ICS	ICS
200mm	ICS	ICS
200mm	ICS	ICS
200mm	ICS	ICS
250mm	ICS	ICS
250mm	ICS	ICS
250mm	ICS	ICS

*Schiedel*

RITE-VENT

Sitemap | Contact | Disclaimer

## Welcome to Schiedel Rite-Vent

Schiedel Rite-Vent

**Home**

Residential Flues  
Commercial Flues  
Information  
Contact Schiedel  
News  
Jobs & Careers

**SPECIALIST INTEREST**

Renovation  
Specifiers & Heating  
Engineers  
Stoves/Open Fires

**DESIGNED WITH YOU IN MIND**

- The new Schiedel Rite-Vent website has sections specifically created for specifiers, heating engineers, merchants and individuals.
- Easy to use selection guides to help you choose the right flue.
- Guidance on secondary heating.
- Separate sections for Residential and Commercial flues.
- Guidance notes on chimney design and an overview of the building regulations.
- Sign-up for regular updates.

Visit the site at:

[www.schiedelrite-vent.co.uk](http://www.schiedelrite-vent.co.uk)A company of **LAFARGE**  
ROOFING**NEWS**

Schiedel Rite-Vent Commercial Brochure  
The new Commercial Systems brochure

**HOUSE OF FLUES**

An interactive guide to help you select the best flue for each appliance around the home.

# www.schiedelrite-vent.co.uk

**Schiedel Rite-Vent**

Crowther Estate  
Washington  
Tyne & Wear NE38 0AQ  
Tel. +44 (0)191 416 1150  
Fax. +44 (0)191 415 1263  
[sales@schiedelrite-vent.co.uk](mailto:sales@schiedelrite-vent.co.uk)